

# Portable Fire Extinguishers



Copyright approval from the Office of the Fire Marshall, New Brunswick

## Every Home Should Have a Working Fire Extinguisher

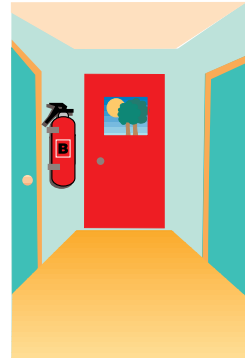
Contact your local fire department for information on buying the best fire extinguisher for your needs.

### Extinguisher Location and Maintenance:

#### Extinguishers Should Be Mounted:

- Following the N.F.P.A. 10 instructions;
- In plain view — **Never hang things on it...like coats;**
- Out of the reach of small children;
- Near an exit door;
- Away from stoves and heating appliances;
- With the instruction label in view — **Never paint a fire extinguisher.**

**Remember** to read the instructions and familiarize yourself with your extinguisher. After a fire has started is no time to learn.



### Maintenance:

#### Monthly:

- Follow your manufacturer's directions for care and maintenance.
- Check the round pressure gauge on the extinguisher's head to see if it is at operating pressure. Dry powder extinguishers must be gently rocked top to bottom to make sure the powder is not packing.

#### Yearly:

- Fire extinguishers shall be subjected to maintenance not more than 1 year apart, at the time of hydrostatic test, or when specifically indicated by an inspection.

- Rechargeable models must be serviced after every use.
- Disposable models can only be used once and should be replaced after use.
- Hydrostatic test date must be adhered to.
- Have your extinguisher serviced regularly by a qualified service person. Contact your local fire department for the one nearest you or check the yellow pages under Fire Extinguisher Service.

### Using Your Portable Fire Extinguisher

Always follow the manufacturer's directions for the size and model you have; not all extinguishers work the same.

#### One simple rule to follow is PASS:

- **Pull the pin** — some models require you to remove a locking pin.
- **Aim low** — direct the hose nozzle or cone at the base of the fire.
- **Squeeze the handle** — this will release the contents of the extinguisher.
- **Sweep from side to side** — while moving forward with the extinguisher.



### Fight or Flight

Before you try to fight even a small fire remember to:

- Evacuate the building.
- Call the fire department.
- Make sure the fire is small enough to handle safely.

- Keep your back to an unobstructed exit.
- Make sure your extinguisher is the proper one for the job, and that you know how to use it. **“Read it before you need it.”**
- Most home fire extinguishers are designed to handle small, contained fires. **Never attempt to fight a fire if it puts you in danger!**

### Classes of Fires

There are four classes of fires that can occur in the home:

- **“A” class fires** - ordinary combustibles - wood, paper, cloth, rubber, etc.
- **“B” class fires** - flammable or combustible liquids, flammable gases, grease, oil-base paints, lacquers, some rubbers
- **“C” class fires** - energized (plugged-in) electrical equipment - household appliances, televisions, radios, stoves, etc.
- **“D” class fires** - combustible metals - magnesium, sodium, potassium



For general household use we recommend a multi-purpose ABC extinguisher.

### How Will You Know if Your Extinguisher is the Correct One to Fight These Fires?

- Portable fire extinguishers are certified according to their intended use. They are also rated by independent laboratories to determine their extinguishing potential.
- These ratings, which can be found on the extinguisher's label, may consist of a letter or a number and letter, or some combination of both. **The letter** refers to

the class of fire on which the extinguisher can be used. **The number**, used on Class A and B extinguishers only, indicates the extinguisher's effectiveness.

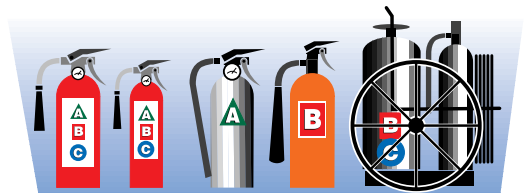
- **Example:** A fire extinguisher is rated and classified 4-A:20-B:C. This indicates the following:
  1. It should extinguish approximately twice as much Class A fire as a 2-A (2 1/2 gal (9.46-L) water) rated fire extinguisher.
  2. It should extinguish approximately 20 times as much Class B fire as a 1-B rated fire extinguisher.
  3. It is suitable for use on energized electrical equipment.
- **Portable fire extinguishers were designed to fight** small, contained fires in the home, at the workplace and in the community. Remember, proper training must be taken before you attempt to fight any fire, large or small.
- **Small fires** have the potential to become large fires very quickly. The improper use of a portable fire extinguisher can increase this danger. If you use the wrong kind of extinguisher or use it in the wrong manner, the outcome could be disastrous.
- **Never** put yourself and others in danger.

**It is always best to:**  
**Know When To Go: React Fast To Fire**  
**Get out and stay out.**

**Close the doors behind you to contain the fire.**

**Call the fire department from a neighbour's phone.**

**Leave the fire fighting to the professionals!**



20 lb 8 kg    10 lb 4 kg    Water Type    CO<sup>2</sup> Type    Wheel Type